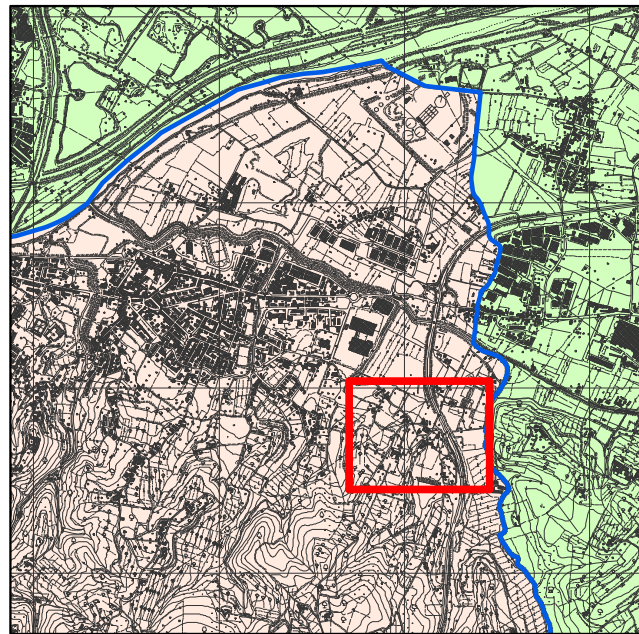








*Elaborato tecnico R.I.R.
(Rischio di incidenti rilevanti)*

Tav. 1A Inquadramento territoriale
Novembre 2017
Scala 1:2000



Legenda

-  Comune di Lastra a Signa
-  Comune di Scandicci
-  Confini
-  Area dello stabilimento
-  Area di elevata letalità (massima estensione)
-  Area di inizio letalità (massima estensione)

